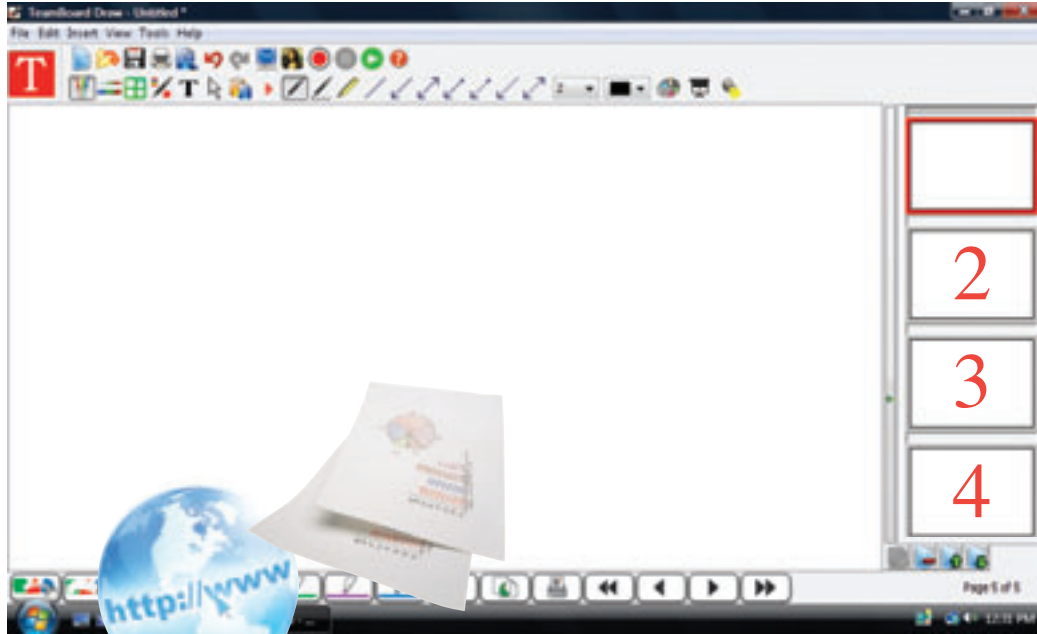


TeamBoard Suite 5.5



TeamBoard Draw

Easy Does It - No Limits

TeamBoard Draw is an advanced presentation, training and lesson plan application that adds remarkable functionality to the TeamBoard. TeamBoard Draw features dry-erase whiteboard capture and presentation annotation software in an easy to use package that enriches interactive whiteboard use by creating digital notes that can be shared and reused without the use of a projector. Teachers can create interactive lessons that can be shared and edited.

TeamBoard Draw can be purchased separately for use with any Interactive WhiteBoard (IWB) and is included at no additional cost with the purchase of every TeamBoard.

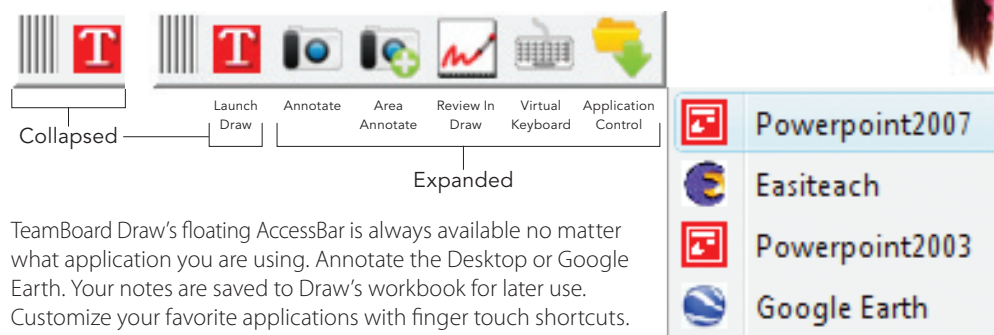
Picture-In-Picture tutorials

TeamBoard Draw features onboard PiP video tutorials that teach you how to use the software quickly and easily. The tutorials wait while you try each step. In moments you will be proficient and on your way to being an expert with no expensive training required.

Use your current software, tools and resources

TeamBoard Suite includes tools that help you make the most of your current software and how you work today. Customize IWB tools for your favorite applications. Annotate messages, create attention and reveal information only when you are ready—Easy does it!

TeamBoard AccessBar: Interactive Mode



TeamBoard Draw's floating AccessBar is always available no matter what application you are using. Annotate the Desktop or Google Earth. Your notes are saved to Draw's workbook for later use. Customize your favorite applications with finger touch shortcuts.



easy
does it.™

TeamBoard Suite 5.5

Price Sheet: 24B75_-2010
TMDRAW-WIN
TMDRAW-MAC
TMDRAW-LINUX

Other TeamBoard Software available:

WizTeach Software

Price Sheet: 24B75_-2020
TMWTOEM-CD
TMWTOEM-CDMAC
TMWTOEM5
TMWTOEMSITE

Please also visit
www.teamboard.com/library
for accompanying
Price Specification sheet



Save your lessons

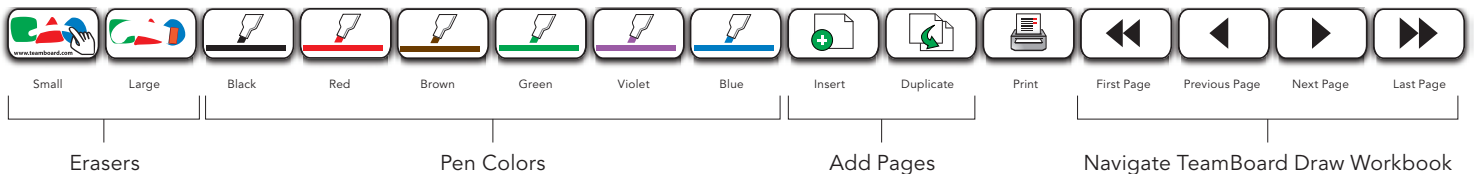


Features

Benefits

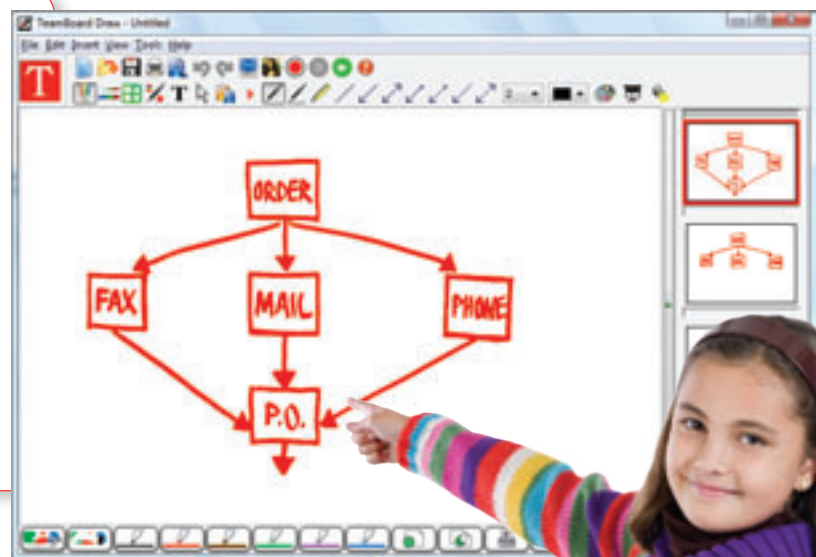
- | | |
|----------------------------------|--|
| ✓ Programmable AccessBar | <ul style="list-style-type: none"> > The AccessBar is a floating toolbar that provides programmable quick launch of favorite commands or applications > Keep all of your curriculum software ready to go with the touch of your finger > Allows teacher/presenter to add all the necessary programs and short cuts needed for easy access |
| ✓ PIP Tutorials | <ul style="list-style-type: none"> > Built-in Picture-in-Picture (PiP) tutorials > Play back inside TeamBoard Draw > No manuals or CDROMs to lose |
| ✓ Simple GUI (Graphic Interface) | <ul style="list-style-type: none"> > Intuitive icons make tools and basic tasks easy to find and use > No intimidating dialog boxes |
| ✓ ActionBar Integration | <ul style="list-style-type: none"> > The software integrates with TeamBoard RT's ActionBar, for one-touch command of popular functions > Location of the hardware-based ActionBar in TeamBoard RT models is along the bottom, where it can be easily reached by participants of all stature, seated or standing > ActionBar is icon-based, using familiar icons—it is not specific to any one language |
| ✓ Unlimited Software Downloads | <ul style="list-style-type: none"> > No limit to the number of software downloads per TeamBoard, therefore can be used on as many computers as necessary |
| ✓ Dry-Erase Note Capture | <ul style="list-style-type: none"> > Dry-erase markers are used to record ideas on the TeamBoard and captured to the computer electronically > Convert handwritten notes to text > Save notes written over software applications directly into the application such as PowerPoint™, Windows Live Messenger™, and MS Paint™ |

TeamBoard Hardware ActionBar: Supports Interactive and Whiteboard Modes



easy
does it.™

- Easy to use
- Increases audience retention and engagement
- Fosters an enthusiasm for learning
- Learners absorb information easily
- Improves student achievement



Design Intent

TeamBoard Suite Software has been designed to make life easy for educators, presenters and trainers. The software has been designed to be intuitive so first time users can get started quickly.

Operating Specifications

Operating Systems	Windows, Macintosh and Linux
Windows	Windows 7, Windows 2000, XP, and Vista at 500Mhz +
Macintosh	Mac OS® X with G4 + Intel processors
Linux	Red Hat, Debian, Suse, Ubuntu and Fedora
RAM	512Mb (1GB MD Vista)
Hard Drive Storage	333Mb (Additional clip art and tutorials increase this value)
Compliances	BECTA Open IWB format The management systems governing the design and manufacture of this product are ISO9001:2008 and ISO14001:2001 certified
Software	Includes TeamBoard Suite 5.5 and TeamBoard Draw software; upgrades are free, unlimited and downloadable
Upgrades	24/7 for life on TeamBoard.com for registered customers

Key Features



Intuitive Tools

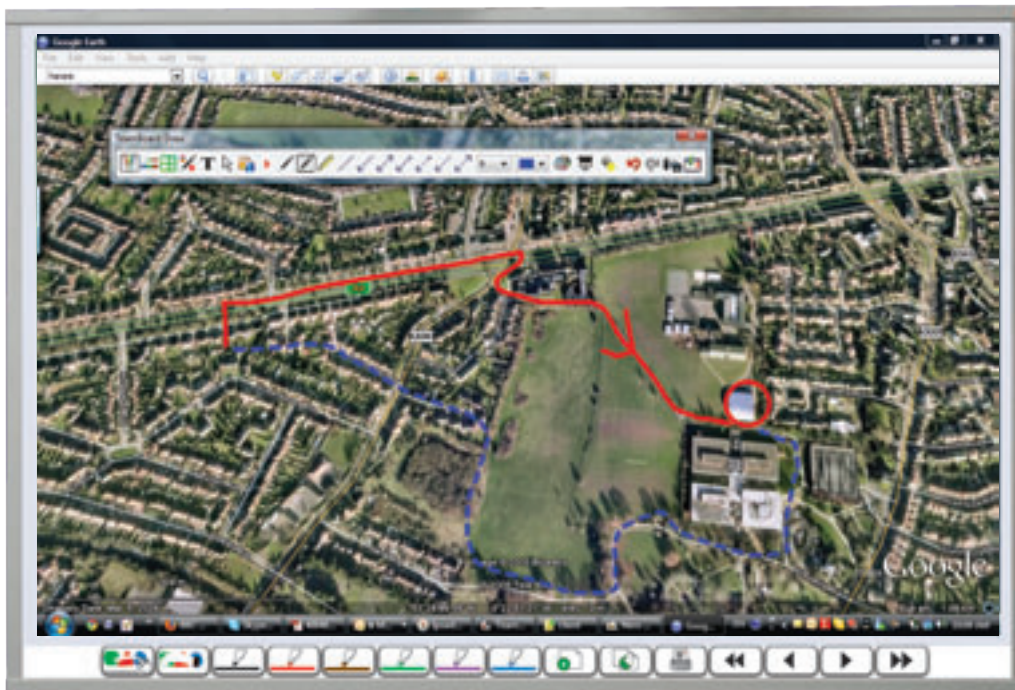
TeamBoard Draw for Windows®, Mac OS® X or Linux provides the essential tools to intelligently assist you in content preparation and delivery. You'll really enjoy this intuitive, easy-to-use annotation application.

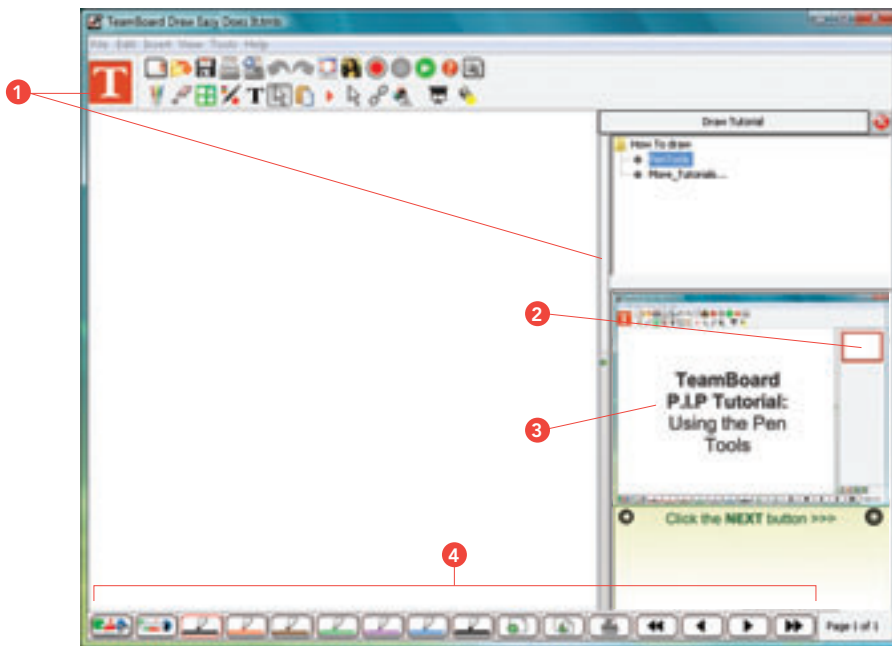
PiP Tutorials

See how to do it while you're doing it. Tutorials play alongside your work so you really understand how the tools work.

Open File Format

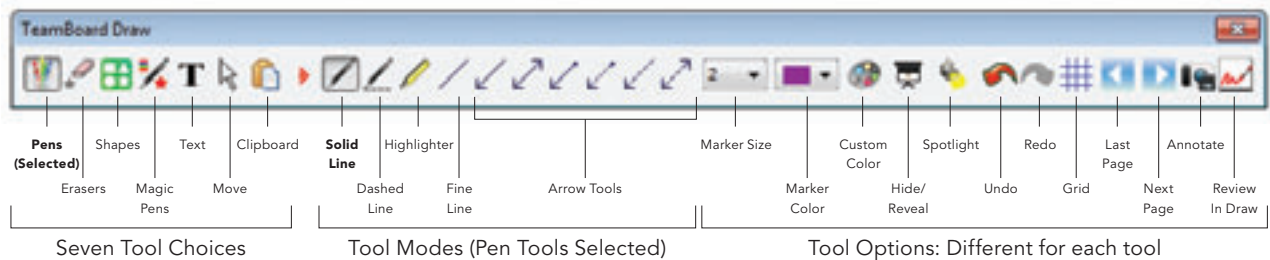
TeamBoard supports the global BECTA IWB format so your files can be used with any interactive whiteboard.





- 1 **Simple Icons** for easy does it command of shape, text and other tools. Picture-In-Picture tutorials teach software fundamentals within the software itself.
- 2 **Page Sorter** Move notes and lesson plans from page to page. Similar to paperless a flip chart plus the digital ability to save, copy or distribute all the material and pages after the lesson.
- 3 **Picture-In-Picture** TeamBoard Draw features onboard PiP video tutorials that teach you how to use the software quickly and easily. The tutorials wait while you try each step. In moments you will be proficient and on your way to being an expert with no expensive training required.
- 4 **ActionBar** No proprietary pens or pen trays required to operate a TeamBoard. Instead you can launch eraser and pen tools with the touch of a finger.

TeamBoard Annotation Bar: Fullscreen Annotation – (Pen Tool selected with Solid Line option)



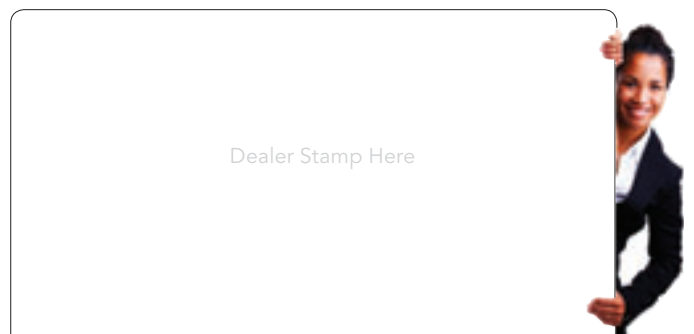
What's in the box...

TeamBoard Suite 5.5 is available in 22* different languages and compatible with all Windows, Macintosh and Linux operating systems. Downloads and upgrades are free, unlimited and available online. TeamBoard Draw has all of the tools and resources necessary to create compelling interactive lessons quickly and simply.

AccessBar is a presentation tool bar that assists with annotation, customizing your software for IWB use and providing one touch access to Virtual Keyboard, TeamBoard Draw and more.

*Additional languages in development

Easy does it: If you have any problems, pick up the phone and let us know. We expect, and need, our customers to be delighted with our products and services.



Designed and manufactured in North America by **Egan & TeamBoard**, leaders in the Interactive Whiteboard marketplace for 15 years. TeamBoard is part of the Egan Visual family, designers and manufacturers of visual communication products for over 40 years. You can count on TeamBoard products to be well-designed and well-built for years of hassle-free enjoyment.

Environmentally responsible design, quality, cost and timeliness. Egan TeamBoard Inc. has been certified by UL™ to have established, documented, implemented and maintain a Quality Management System as well as an Environmental Management System, and is registered to the ISO9001:2008 and ISO14001:2004 standards.



Egan TeamBoard, Inc.
International
Tel +1-905-851-2826
Fax +1-905-851-3426
www.egan.com
www.teamboard.com

Egan TeamBoard, Inc.
US Eastern / Central States & Canada
Tel +1-905-851-2826 1-800-263-2387
Fax 1-888-609-8886
sales@teamboard.com

Egan TeamBoard, Inc.
US Mountain and Western States
Tel +1-323-720-1336 1-800-826-1778
Fax 1-800-726-1314
support@teamboard.com

